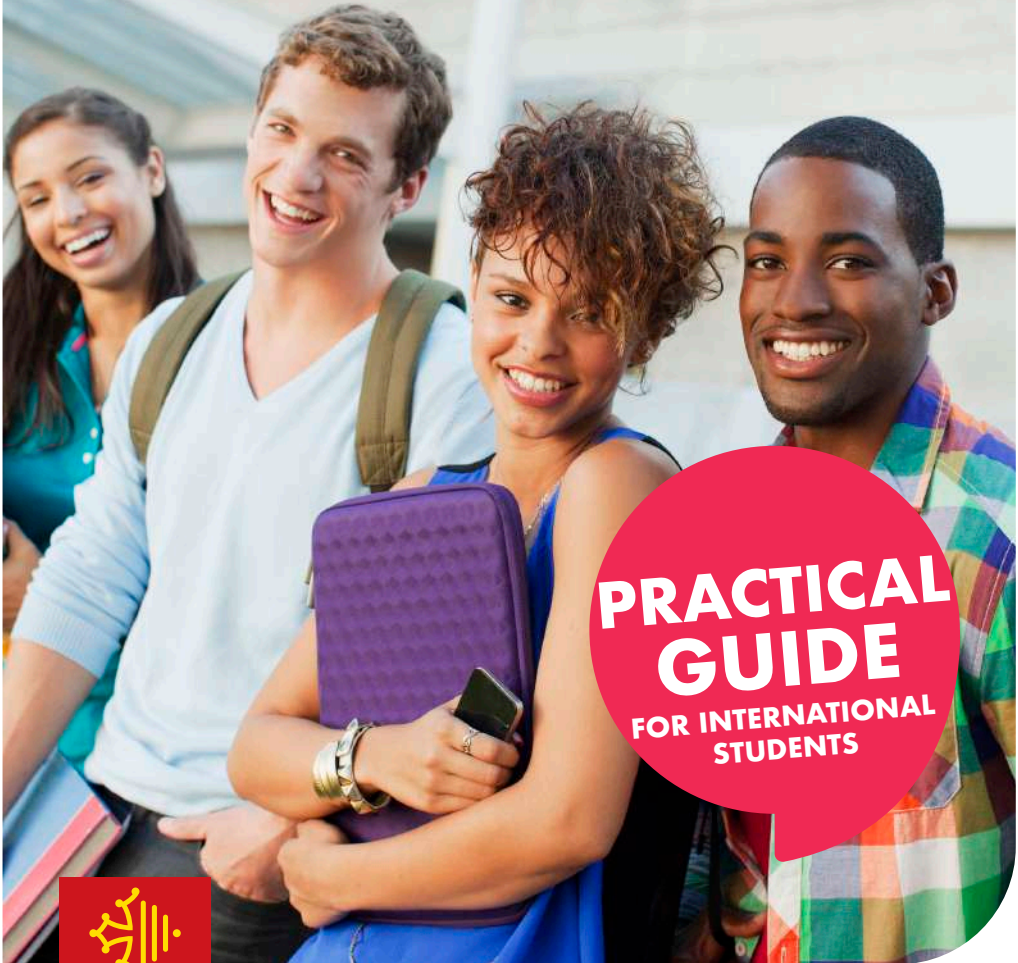




# STUDY

## IN MONTPELLIER, NÎMES AND PERPIGNAN



**PRACTICAL  
GUIDE**  
FOR INTERNATIONAL  
STUDENTS



**2021 EDITION**

# STUDY

IN MONTPELLIER,

NÎMES AND PERPIGNAN



<b>1</b>	<b>HIGHER EDUCATION</b> .....	2
	<b>A.</b> Higher education in France.....	2
	<b>B.</b> Higher education in Montpellier, Nîmes and Perpignan.....	6
	<b>C.</b> Higher education establishments and services in Montpellier, Nîmes and Perpignan.....	8
<b>2</b>	<b>STUDENT PATHWAY</b> .....	10
	International buddying.....	11
<b>3</b>	<b>ADMINISTRATIVE PROCEDURES</b>	
	<b>A.</b> Before you depart: applying for admission.....	12
	<b>B.</b> When you arrive: obtaining a residence permit.....	14
<b>4</b>	<b>PRACTICAL INFORMATION</b> .....	17
	<b>A.</b> Accommodation.....	17
	<b>B.</b> Health.....	22
	<b>C.</b> Budget.....	24
	<b>D.</b> Food.....	26
	<b>E.</b> Transport.....	26
	<b>F.</b> Culture.....	27
	<b>G.</b> Documents to be supplied.....	28
	<b>H.</b> Glossary.....	29
	<b>CONTACTS</b> .....	10
○	Useful addresses at each university and establishment	

**A HIGHER EDUCATION IN FRANCE:**

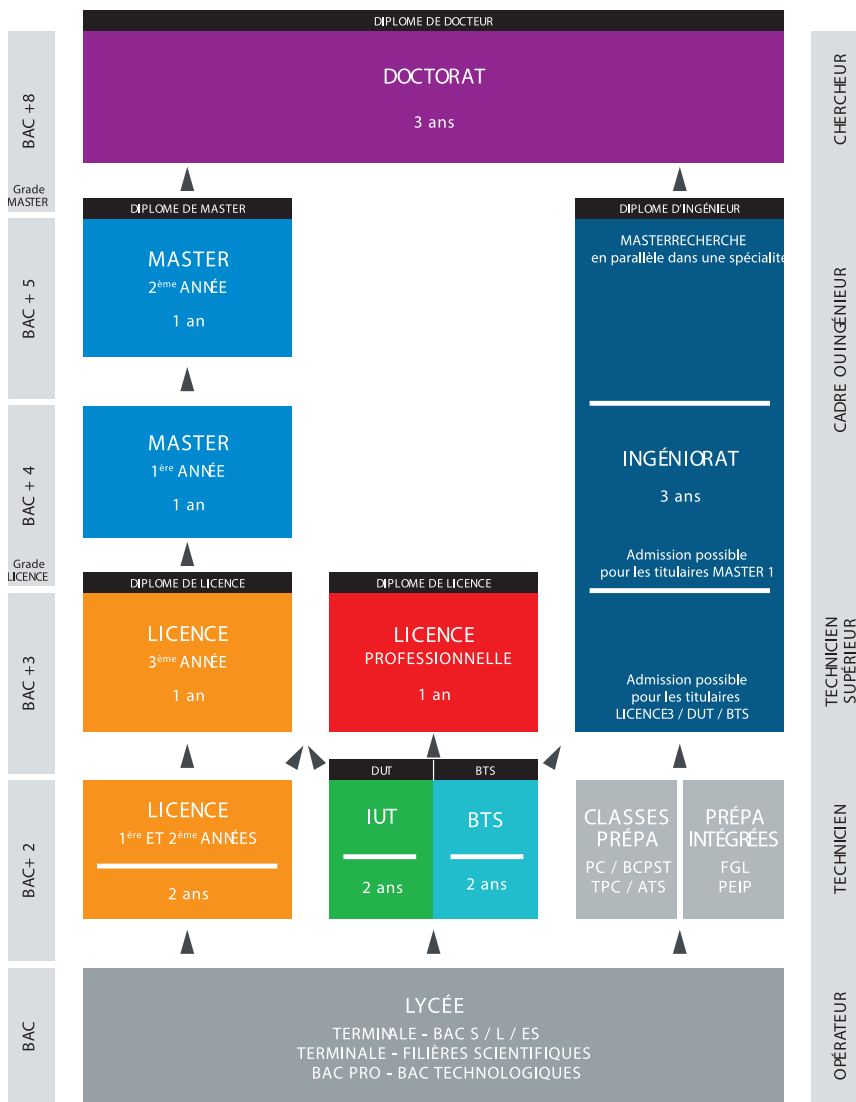
**French universities organise their courses over 3, 5 and 8 years, awarding Bachelor's Degrees (licence, L), Master's Degrees (M) and Ph.D Degrees (doctorat, D) respectively.**

For all degrees, the tuition is split into terms/semesters (one student can complete 2 terms/semesters per academic year), each one corresponding to 30 credits, which can be accumulated or transferred within France and Europe.



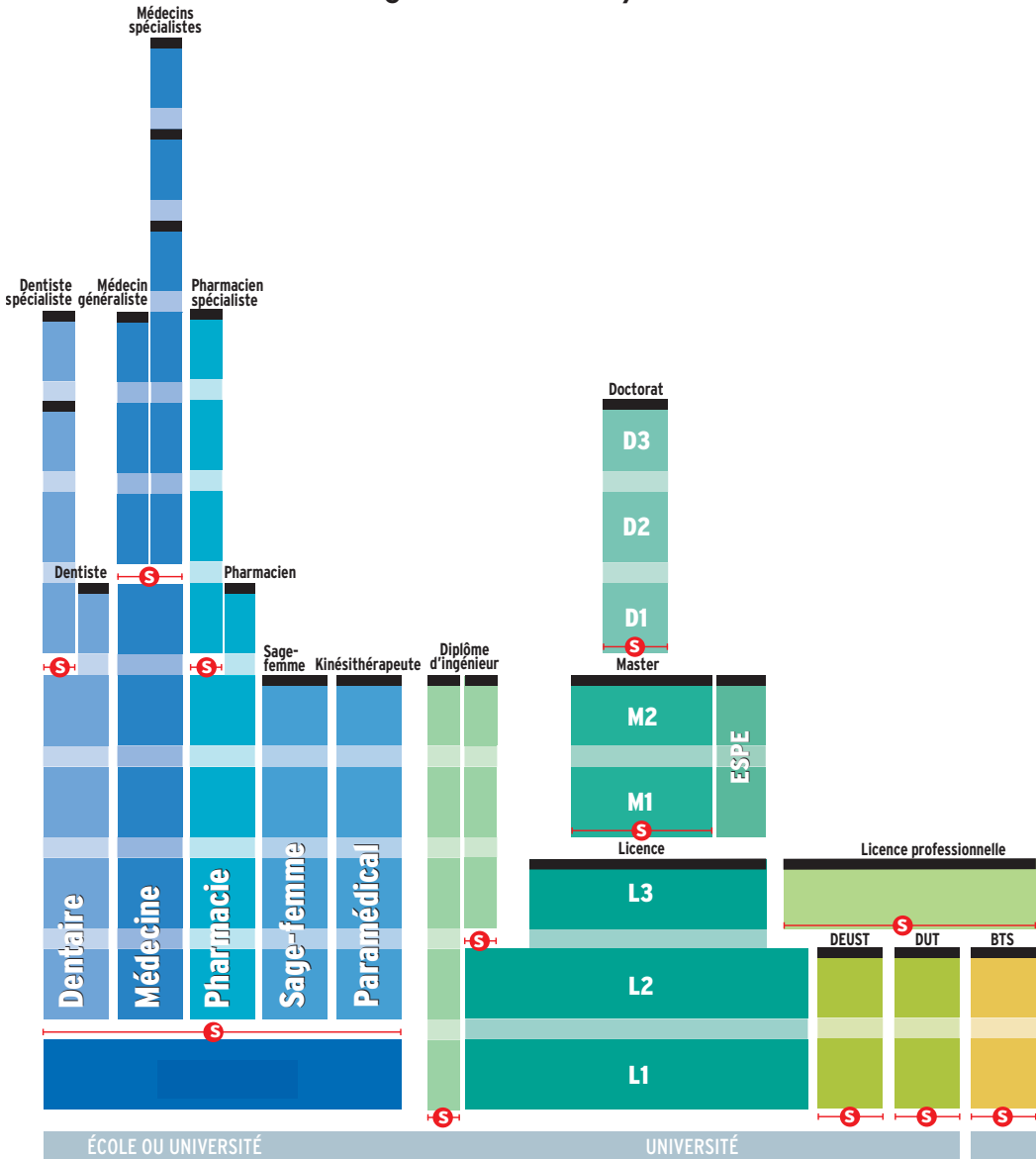
Degree

Means of entry  
Degree awarded



# LMD, a European framework

## The higher education system



ÉCOLE OU UNIVERSITÉ

UNIVERSITÉ

■ Diplôme ou Diplôme d'État

⊞ Access sélectif (concours à épreuves, sélection sur dossier)

Il existe des passerelles entre ces différentes filières par exemple de la L1 vers un BTS ou un DUT ; de la PACES vers la licence ; des classes préparatoires aux grandes écoles (CPGE) vers la licence.

BTS : brevet de technicien supérieur

DCG : diplôme de comptabilité et de gestion

DE : diplôme d'État

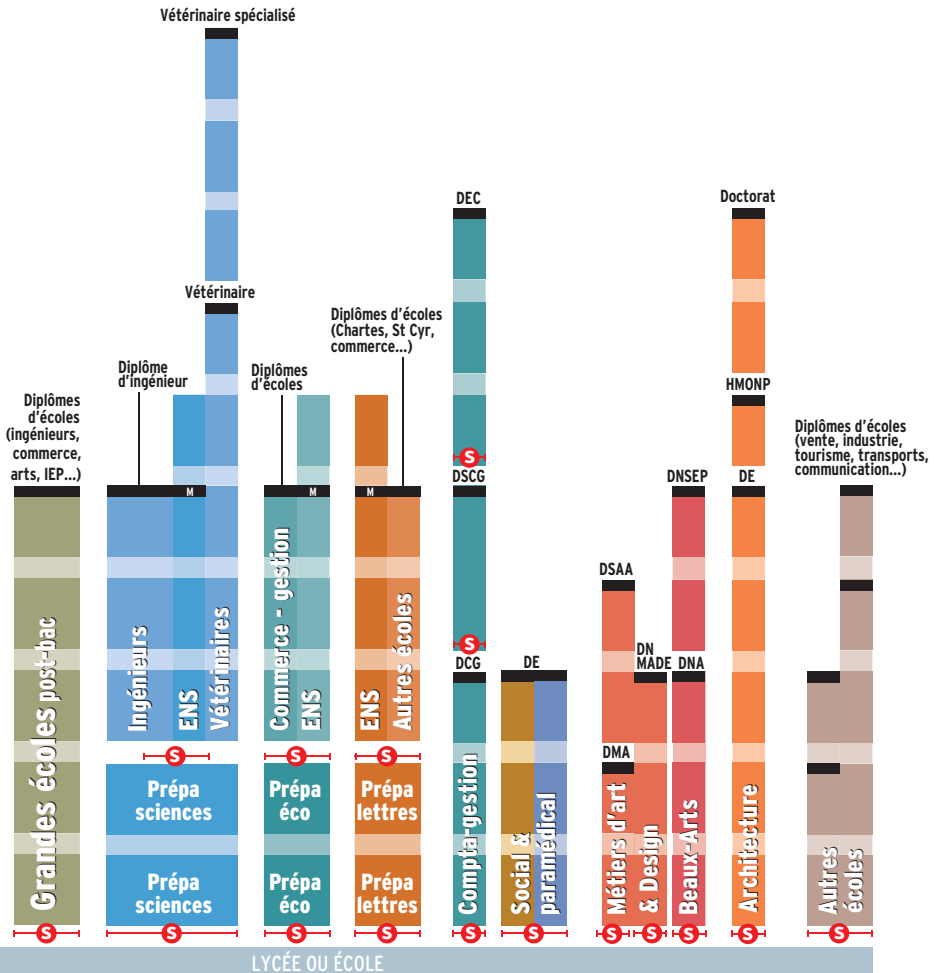
DEC : diplôme d'expert-comptable

DEUST : diplôme d'études universitaires scientifiques et techniques

DMA : diplôme des métiers d'art

DNA : diplôme national d'art

DN MADE : diplôme national des métiers d'art et du design



LYCÉE OU ÉCOLE

**DNSEP** : diplôme national supérieur d'expression plastique  
**DSAA** : diplôme supérieur d'arts appliqués  
**DSCG** : diplôme supérieur de comptabilité et de gestion  
**DUT** : diplôme universitaire de technologie  
**ENS** : école normale supérieure  
**ESPE** : école supérieure du professorat et de l'éducation

**HMONP** : habilitation à l'exercice de la maîtrise d'œuvre en son nom propre  
**IEP** : institut d'études politiques  
**L** : licence  
**M** : master  
**PASS** : Special Health Access Course  
**LAS** : Health Access Degree

HIGHER EDUCATION IN MONTPELLIER,  
NÎMES AND PERPIGNAN**University  
of Montpellier**[www.umontpellier.fr](http://www.umontpellier.fr)

Management  
 Law and Political Science  
 Economics  
 Civil Service Preparation  
 Institute (IPAG)  
 Medicine  
 Odontology  
 Pharmacy  
 Physical Activity and Sports  
 Sciences and Technologies  
 (STAPS)

Sciences:

- fundamental biology
- applied biology and ecology
- chemistry
- engineering sciences
- sciences of the universe
- physics and mathematics
- Institute of Business  
Administration (IAE)
- Polytech - School of  
Engineering

Montpellier-Sète University  
Technology Institute (IUT)

Béziers University Technology  
Institute (IUT)

Nîmes University Technology  
Institute (IUT)

Faculty of Education

**Paul Valéry-Montpellier 3  
University**[www.univ-montp3.fr](http://www.univ-montp3.fr)

Literature, Arts, Philosophy,  
Psychoanalysis  
 Foreign and Regional Languages  
and Cultures, and Applied  
Foreign Languages (LEA)  
 Human Sciences and  
Environmental Sciences  
 Economic, Legal, Social and  
Management Sciences  
 Social Sciences (Sociology,  
Ethnology, Psychology and  
Health and Social Sciences)  
 Education and Sciences for  
Languages, Literature, Art,  
Human and Social Sciences  
(LLASHS)  
 Institute of Information and  
Communication Technosciences  
(ITIC) (Information-  
Communication and Language  
Sciences)  
 University Institute for Teaching  
French as a Foreign Language  
(IEFE)

**University  
of Nîmes**[www.unimes.fr](http://www.unimes.fr)

English  
 Design  
 Life Sciences  
 Law  
 Economic and Social  
Administration  
 Spanish  
 History and Heritage  
 Applied Modern Literature  
 Mathematics  
 Psychology  
 Physical Activity and Sports  
Sciences and Technologies  
(STAPS)



## University of Perpignan Via Domitia

[www.univ-perp.fr](http://www.univ-perp.fr)

Arts, Literature and Languages  
Legal and Economic Sciences

Human and Social Sciences  
Education Sciences

International Tourism and  
Hotels

Science, Technology and Health

Physical Activity and Sports  
Sciences and Technologies  
(STAPS)

Perpignan University Technolo-  
gy Institute (IUT)

Institute of Business Adminis-  
tration (IAE)

Cross-Border Franco-Catalan  
Institute (IFCT)

University Centre for French  
Studies (CUEF)

Sup'EnR School of Engineering

## Agro | Montpellier SupAgro institute (national higher education institute for agriculture, food and the environment)

[www.montpellier-supagro.fr](http://www.montpellier-supagro.fr)

Main subjects of agriculture, food,  
sustainable management of natural  
resources and land

Biology and Ecology Department (BE)

Habitats, Production, Resources,  
Environment Department (MPRS)

Department for the Science of  
Agricultural and Biological Processes  
(SABP)

Department of Economic, Social and  
Management Sciences (SESG)

Institute of Advanced Studies of Vines  
and Wine (IHEV)

Hot Regions Institute (IRC)

Florac Institute of Agro-Environmental  
Education (IEAE)

SupAgro Fondation university  
foundation

UNESCO Chair in "Foods of the World"

Business chairs: AgroTIC and AgroSYS

ELSA-PACT industrial chair

Domaine du Chapitre estate and Mas  
Numérique technology farm (Villeneuve-  
lès-Maguelone)

Domaine du Merle estate (Salon-de-  
Provence)

Montpellier SupAgro International  
Students Reception Unit

## ENSCM Higher Institute of Chemistry of Montpellier

[www.enscm.fr](http://www.enscm.fr)

Chemistry-Health:

- Fine Organic Chemistry
- Chemistry Biology Health
- Engineering of Natural  
Active Principles

Chemistry-Materials-  
Environment:

- Materials Chemistry
- Environmental  
Decontamination and  
Management
- Nuclear Chemistry and the  
Environment
- Chemistry and Bio-  
processes for Chemistry for  
Nuclear/the Environment

## C

## HIGHER EDUCATION ESTABLISHMENTS AND SERVICES IN MONTPELLIER, NÎMES AND PERPIGNAN



### ► SITE POLICY

- University of Montpellier
- Paul Valéry-Montpellier 3 University
- University of Nîmes
- University of Perpignan - Via Domitia



### ► CROUS MONTPELLIER-OCCITANIE

All the services for student life

[www.crous-montpellier.fr](http://www.crous-montpellier.fr)

- Social and financial support
- Accommodation
- Food
- Campus life / culture

⇒ **Izly multi-service card**  
(student card, e-wallet)  
[www.izly.fr](http://www.izly.fr)



⇒ **Cales-LR\* portal (online higher education catalogue for the Languedoc-Roussillon Region):**  
[www.formations-lr.fr](http://www.formations-lr.fr)

⇒ **Espace Numérique de Travail (ENT\*) (digital workspace):**  
The ENT is an online services portal offering a single access point where students can find information and digital tools and services related to their studies. Students can log in by going to a special web page accessible from their university site, and entering their name and password. This gives them access to personalised services related to their course.

⇒ **Interuniversity library:** [www.biu-montpellier.fr](http://www.biu-montpellier.fr)

⇒ **University Services for Physical Activity and Sports (SUAPS):**  
<https://sport-u-occitanie.com/>  
[www.unimes.fr/fr/vie\\_etudiante/sport\\_unimes.html](http://www.unimes.fr/fr/vie_etudiante/sport_unimes.html)  
<https://www.univ-perp.fr/fr/menu/vie-etudiante/sport/>

⇒ **Student Houses and Offices:**  
These exist within each university; find contact details for them on the websites of the establishments concerned.



\* see glossary p. 29

## 2

# STUDENT PATHWAY

ADMISSION TO  
UNIVERSITY

1



2



3

VISA FROM  
THE CONSULATE

TRANSPORT

RESIDENCE PERMIT OR  
VISA VALIDATION

8



9

REGISTRATION AT  
UNIVERSITY,  
SOCIAL SECURITY  
AND INSURANCE

7

BANK, CAF\*,  
INSURANCE



**HAVE A GREAT  
ACADEMIC YEAR!**

\* see glossary p. 29



4

**BUDDY  
WELCOME**

**ACCOMMODATION**

5



6

**FIRST CONTACT  
WITH UNIVERSITY**



► **ASSISTANCE WHEN YOU  
ARRIVE IN MONTPELLIER,  
NÎMES OR PERPIGNAN**

**Would you like someone to meet and  
assist you when you arrive?**

CROUS Montpellier-Occitanie and the International Student Office (SAIEC) run an "international buddying" scheme. You can use the scheme whether you are travelling alone or as part of an exchange programme (p.12)!



**Your buddy, who will be a French or foreign student:**

- Will contact you by email before you arrive
- Will welcome you at the station or airport
- Will accompany you to your accommodation
- Will help you with the required administrative procedures, if you wish

**Register for a buddy:**

[www.parrainage-international.fr](http://www.parrainage-international.fr)

# 3

## ADMINISTRATIVE PROCEDURES

### A. APPLYING FOR ADMISSION: FORMALITIES TO BE COMPLETED BEFORE YOU TRAVEL TO FRANCE

The formalities to be completed in order to come and study in France are decided nationally. You should start preparing for your stay well in advance.



**You must be able to understand the French language. Most teaching and examinations will be in French. Find out from the university of your choice the language level required (and what evidence you must provide) + France Education International <https://www.france-education-international.fr/>**

If you are coming as part of **an exchange programme, e.g. ERASMUS+**, the BCI's PEE programme (the Quebec Student Exchange Program run by the *Bureau de coopération interuniversitaire*, formerly CREPUQ), you should ask your home university. They should find out this information from your host university.

If you are **registering individually**: procedures vary depending on your home country (EU or non-EU), the type of institution (university, school, IUT, etc.), the type of course (languages, medicine, etc.) and the level of access (Bachelor's degree (Licence)/Master's degree (Master)/Ph.D (Doctorat)).

**The main procedures to be completed before admission are to submit an application for admission and to obtain a visa.**

### FIRST YEAR OF BACHELOR'S DEGREE AND PASS AND LAS



**Warning: applications MUST be submitted by the required deadline**

**To apply for the first year of a Bachelor's Degree, there are two possibilities:**

#### **If you live abroad**

- International students living in a country with the CEF procedure  
There is a mandatory procedure for **applying online for admission (DAP procedure)** on the website of the Centre pour les Etudes en France (CEF): [www.campusfrance.org](http://www.campusfrance.org)  
This is a quick and simple process but you are required to pay a fee.
- International students living in a country without the CEF procedure  
In countries where this procedure does not exist, you must complete an application form (DAP) for admission, at the cultural service of the French Embassy in the country where you live (white form).

- If you live in France: You must download the application form from the website of the Ministry of National Education (Ministère de l'Éducation nationale) (green form).
- Online, at the following address: [www.enseignementsup-recherche.gouv.fr/cid24146/-dossier-vertdemande-d-admission-prealable-en-premiere-annee-de-licence.html](http://www.enseignementsup-recherche.gouv.fr/cid24146/-dossier-vertdemande-d-admission-prealable-en-premiere-annee-de-licence.html)
- On Google: search for *dossier vert*.

## ▸ OTHER YEARS OF STUDY



**Warning: applications MUST be submitted by the required deadline**

**For other years of study, (Bachelor's 2nd year, Bachelor's 3rd year, Vocational Bachelor's, Master's 1st year, Master's 2nd year, IUT and engineering degrees),** those living abroad (outside Europe) must follow the "Études en France" procedure. If your country does not have this system, you should apply directly to the establishment.

## ▸ PH.D STUDENTS AND ESTABLISHMENTS WITH SPECIAL ADMISSION PROCEDURES

**Applications for admission should be made directly to the establishment concerned in the case of registration for:**

- preparatory classes for the *grandes écoles*,
- the senior technicians section (in *lycées*),
- university postgraduate degrees,
- or any other specialist establishment and/or establishment that recruits by means of a competition or admissions panel or based on a qualification.

## ▸ OBTAINING A VISA

Admission to your chosen establishment will enable you to apply for a long-stay student visa.



# 3

## ADMINISTRATIVE PROCEDURES

### B OBTAINING A RESIDENCE PERMIT: FORMALITIES TO BE COMPLETED WHEN YOU ARRIVE IN FRANCE



All foreigners aged over 18 who want to stay in France for more than 3 months must have a residence permit.

#### ▶ LONG-STAY STUDENT 'D' VISA (CESEDA R311-3 6°)

If you obtained a long-stay student 'D' visa for France from the French consulate/embassy in your country, this visa is marked 'CESEDA R311-3 6°'.

#### ≡ on your arrival in France

Within 3 months of your arrival in France, you must validate your visa at the following address: <https://administration-etrangers-en-france.interieur.gouv.fr/particuliers/#/>

#### You will need:

- a valid email address
- the information stated on your visa
- to provide the date you entered France
- the address where you are living in France
- your payment card for online payment of the mandatory €50 fee



Validate your  
VLS-TS long  
stay visa



I would like to  
apply or renew  
my residence permit

Once you have validated your long-stay visa, which acts as your residence permit, you will be given a medical check by the health service of the higher education establishment that you are registered with.





⇒ **Within 2 months of the expiry date of your VISA or residence permit, you must apply to renew it online at the following address:**

<https://administration-etrangers-en-france.interieur.gouv.fr/particuliers/#/>

("I would like to apply or renew my residence permit")

There are services available to advise and assist you with the procedure:

### ⇒ in Montpellier

**Service Accueil International Étudiants/Chercheurs (international student office) (SAIEC)**

Tel.: +33 (0)4 67 41 67 87 – E-mail: [saiec@univ-montp3.fr](mailto:saiec@univ-montp3.fr)

**All year, Monday to Friday from 9 a.m. to 4 p.m.**, our multilingual team of French and foreign students is available upon appointment: [www.saiec.fr](http://www.saiec.fr)

A dedicated digital space for your online procedures: Residence permit, CPAM, CAF, accommodation, etc.

Information and guidance by telephone and email

**E- International Welcome Solution – SAIEC: Your personalised virtual assistant:**

Everything you need to do before and after you arrive in France, in a few clicks!

Choose your avatar and follow the guide.

### ⇒ in Nîmes

Home page of the Gard Prefecture - Immigration and Integration Office

10 avenue Feuchères - 30045 Nîmes Cedex 9

[www.gard.gouv.fr](http://www.gard.gouv.fr)

Telephones are manned from 2 p.m. to 4 p.m.: +33 (0)4 66 87 59 60

Submission of applications by appointment via email: [pref-etrangers-rdv@gard.gouv.fr](mailto:pref-etrangers-rdv@gard.gouv.fr)

### ⇒ in Perpignan

Residence permit one-stop shop at UPVD

Bureau d'Accueil des étudiants internationaux (BAEI)

52 avenue Paul Alduy - Bâtiment BASE - 66860 Perpignan (Bus line 4 - Campus stop)

Tel.: +33 (0)4 68 66 20 11 – E-mail: [guichet-unique@univ-perp.fr](mailto:guichet-unique@univ-perp.fr)

Open from September to November, Tuesdays and Thursdays, 9 a.m. to 12 p.m. and 1.30 p.m. to 4.30 p.m.

For appointments and to find out the documents to be supplied, visit:

<https://www.univ-perp.fr/fr/je-minscris/inscription>

# 3

## ADMINISTRATIVE PROCEDURES

### ▶ OTHER LONG-STAY VISAS

If you have another type of long-stay student VISA (Algerian national, minor in education): you must apply for a residence permit online on the French government website:

<https://administration-etrangers-en-france.interieur.gouv.fr/particuliers/#/>

("I would like to apply or renew my residence permit")

### ▶ GENERAL INFORMATION

≡ International students with a residence permit are permitted to work for up to 60% of the annual legal working time, i.e. for 964 hours per year.

#### ≡ Type "C" tourist visa (short-stay):

This type of visa is intended for foreign nationals who want to enter the Schengen area for tourism purposes or to participate in conferences or other events. It cannot be used to apply for a residence permit.

### ▶ EUROPEAN STUDENTS

European students do not have to apply for a residence permit.



# 4

## PRACTICAL INFORMATION

### A ACCOMMODATION:

Finding accommodation in Montpellier, Nîmes or Perpignan is not straightforward! You need to be well organised and have financial means available as described on p.24. You also need enough money to pay for temporary accommodation at the start and to pay the costs involved in finding accommodation (deposit, agency fees, guarantee, etc. see p.21).

#### ► CROUS PUBLIC ACCOMMODATION

The CROUS international student service offers accommodation in university halls or residences (virtual tour at [www.crous-montpellier.fr](http://www.crous-montpellier.fr) > logement > nos cités/résidences universitaires).

Renting a room in a university hall costs between €176 and €255, depending on the standard of room. Renting accommodation in a residence costs at least €310 per month, depending on the size.

#### 1. Admission criteria

Only students who meet the following criteria will be given accommodation in a university hall:

- registered for study on a course at least equivalent to a 1st year Master's degree, or at one of the following establishments: *Grande École*, preparatory class, IUT, Senior Technician Section (not private institutions).

Individual students must include with their application a rental bond from a person physically resident in France. If the student does not have a guarantor in France, the Visale scheme can be used to provide a rental bond and to finance the deposit: [www.visale.fr](http://www.visale.fr)

#### 2. How to submit an application

To submit an application, you first need to open an account at:

<https://www.messervices.etudiant.gouv.fr>

You can then submit an application for CROUS accommodation from 9 July at:

<https://trouverunlogement.lescrous.fr>

### 3. Application

You must submit your accommodation application within 2 weeks of receiving it, along with the supporting documents required:

- photocopy of your entire passport
- photocopy of the last qualification you gained
- photocopy of your last school attendance certificate (or if you do not have one, evidence of pre-registration at a higher education institution in France).

You will receive a response by email (you must provide an email address that will be valid throughout the academic year) once your application has been examined. The response will be based on the admission criteria.

Accommodation is allocated for an academic year based on the number of places available.

If there are not enough places for everyone who applies, the remaining students will be placed on a waiting list. If you are offered accommodation by CROUS:

- When you receive your offer email, you have **48 hours** to pay the deposit online to reserve it. Keep the payment receipt, which you will be asked to produce when you sign your tenancy agreement at the international student office.
- Provide a rental bond from a person living in France or the approval issued by the Visale scheme.

For more information, go to [www.crous-montpellier.fr / logement / Aides au logement](http://www.crous-montpellier.fr/logement/Aides%20au%20logement)

#### **CROUS International Student Service**

Address: 2 rue Monteil - CS 85053 - 34093 Montpellier cedex 5 (Tram line 1, Boutonnet stop)

Open: Monday, Tuesday, Thursday and Friday, with an appointment from 10 a.m. to 12 noon and without an appointment from 1 p.m. to 4 p.m. Closed Wednesdays.

Tel.: +33 (0)4 67 41 50 38 - [international@crous-montpellier.fr](mailto:international@crous-montpellier.fr)

Applications are assessed according to the level of study, the date of submission, and the number of places available. Even if you fulfil these conditions, CROUS cannot guarantee that you will be allocated accommodation because the number of places is limited.



## › RENTING PRIVATE ACCOMMODATION

### ≡ Websites of CROUS Montpellier and CRIJ\* Languedoc-Roussillon

- **Montpellier**

You can find private offers of accommodation (with no agency fees) at:

[www.lokaviz.fr](http://www.lokaviz.fr)

[www.logement.informationjeunesselr.fr](http://www.logement.informationjeunesselr.fr)

(you can also download a very comprehensive accommodation guide from here)

### ≡ Phare

- **Montpellier**

Phare is a contact point for international students looking for accommodation. Multilingual students are on hand to help students find accommodation with private landlords.

Open September to end October: Monday to Friday, 9 a.m. to 4 p.m.

Address: SAIEC - 8 rue de l'école Normale - CS 78290 - 34197 Montpellier cedex 5

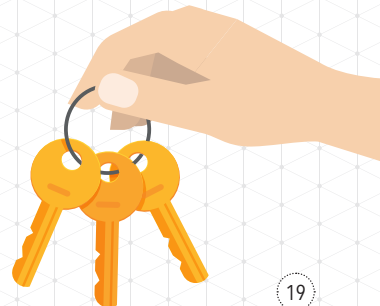
(Tram line 1, Philippiès stop) – Email: [phare@crous-montpellier.fr](mailto:phare@crous-montpellier.fr)

### ≡ Help with obtaining accommodation

- **Visale**

Visale is an Action Logement scheme enabling students who have an income but cannot provide a guarantee from family, friends or the bank to obtain accommodation.

File your application at [www.visale.fr](http://www.visale.fr)



### ▸ ESPACE LOGEMENT ÉTUDIANT

- **Montpellier**

This information service enables you to search for accommodation and complete the administrative procedures related to the accommodation you have found.

Espace Logement Étudiant

From August to October at Corum - Salon du Belvédère - Esplanade Ch. de Gaulle - Montpellier

[www.espace-etudiant.com](http://www.espace-etudiant.com)

- **Nîmes**

<https://unimes.immojeune.com/>

- **Perpignan**

[www.bijperpignan66.fr](http://www.bijperpignan66.fr)

### ▸ TEMPORARY ACCOMMODATION

#### ≡ Youth Hostel

- **Montpellier**

Price per night: €21.50 (breakfast included)

Bookings can be made from abroad.

Address: Impasse de la Petite Corraterie - 34000 Montpellier

Tel. +33 (0)4 67 60 32 22 - Fax: + 33 (0)4 67 60 32 30

[www.fuaj.org/Montpellier](http://www.fuaj.org/Montpellier)

- **Nîmes**

Address: 257 chemin de l'auberge de jeunesse - 30900 Nîmes

Tel. +33 (0)4 66 68 03 20

- **Perpignan**

Address: Allée Marc Pierre, Parc de la Pépinière 66000 Perpignan

Tel. +33 (0)4 68 34 63 32 - Fax +33 (0)4 68 51 16 02

[www.hifrance.org](http://www.hifrance.org)



## › DEPOSIT AND RENTAL BOND

### ≡ Deposit

When you sign your rental agreement, you have to pay a deposit (*dépôt de garantie*). This is used to cover any instances where the tenant fails to meet his or her obligations (repair costs, etc.). This deposit must not exceed one month's rent excluding charges and must be repaid within two months of the keys being returned (for unfurnished rental properties).

### ≡ Rental bond

To rent accommodation you also have to provide a rental bond, which is a document signed by a person living and working in France. This person acts as your guarantor by agreeing to pay any rent that you fail to pay.



**If you pay several months' rent in advance, you should ALWAYS request a receipt from the landlord.**

## › HOUSING BENEFITS

APL (Aides Personnalisées au Logement) and ALS (Allocations de Logement à caractère Social) are types of housing benefit paid by the Caisse d'Allocations Familiales (CAF). Apply online:

**Montpellier:** [www.montpellier.caf.fr](http://www.montpellier.caf.fr)

**Nîmes:** [www.caf.fr](http://www.caf.fr)

**Perpignan:** [www.caf.fr](http://www.caf.fr)

## › HOME INSURANCE

You must take out multi-risk home insurance when renting an unfurnished property and this insurance is strongly recommended if you are renting furnished accommodation. This insurance covers you against the risks of fire, water damage, explosions, liability, theft, etc.

Besides the traditional insurers (insurance companies and mutuals), some banks also offer insurance at prices compatible with student means.

## 4

## PRACTICAL INFORMATION

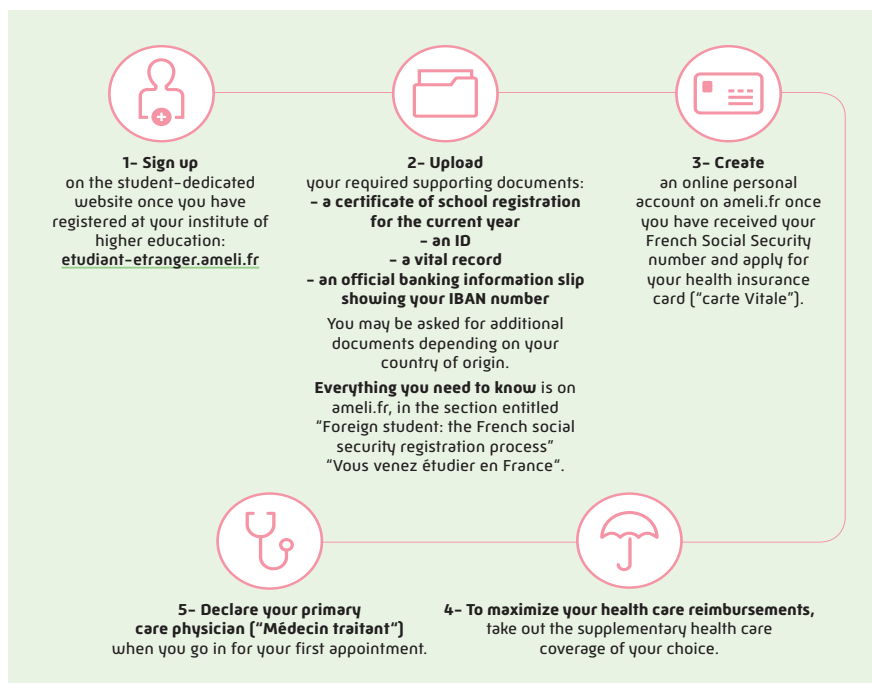
## B HEALTH

## ► SOCIAL SECURITY REGISTRATION

[www.etudiant.gouv.fr/cid104942/la-securite-sociale.html](http://www.etudiant.gouv.fr/cid104942/la-securite-sociale.html)

## → COMING TO FRANCE FOR YOUR STUDIES?

To be **reimbursed** for your health care expenses, you will need to register with France's health care system "l'Assurance Maladie". This is free of charge for students.



If you began your studies in France in fall semester 2019 and registered with us online at [etudiant-etranger.ameli.fr](http://etudiant-etranger.ameli.fr): no further paperwork is required.

If you did not register at that time: **do it now**, this is the only way to get coverage for your healthcare expenses!

NEED TO CONTACT THE FRENCH HEALTH CARE SYSTEM  
["L'ASSURANCE MALADIE"]? IT'S FAST AND EASY!

## BY EMAIL

Log in to your ameli account and go to the "Ma messagerie" section.

## BY PHONE

**3646** Service gratuit  
+ prix appel

## IN PERSON

By going to your local health insurance fund "caisse d'assurance maladie" (CPAM).



## ▸ MONTPELLIER UNIVERSITY HEALTH CENTRE

The Health Centre (Centre de Soins) offers all students in Montpellier healthcare and treatment appropriate to their needs. Full treatment with no upfront fees to pay on presentation of a student card, healthcare card (carte vital) and supplementary healthcare fund certificate (attestation de mutuelle complémentaire). [www.csu-montpellier.fr](http://www.csu-montpellier.fr)

### **Montpellier University Health Centre**

8 rue de l'École Normale - 34090 Montpellier - +33 (0)4 11 28 19 79

## ▸ HEALTH SERVICES

There are teams of doctors, nurses and social workers distributed across the universities. Contact your university to meet them.

University of Nîmes health service: [sumpps@unimes.fr](mailto:sumpps@unimes.fr)

## ▸ DISABILITY

There are support schemes available for students with disabilities at the higher education establishments in Montpellier, Nîmes and Perpignan. Get in touch with the contact person, or visit each university's website for more information.

**University of Montpellier:** [handicap@umontpellier.fr](mailto:handicap@umontpellier.fr)

**Paul Valéry-Montpellier 3 University:** [etud.handi@univ-montp3.fr](mailto:etud.handi@univ-montp3.fr)

**University of Nîmes:** [handicap@unimes.fr](mailto:handicap@unimes.fr)

**University of Perpignan Via Domitia:** [baeh@univ-perp.fr](mailto:baeh@univ-perp.fr)

**Agro | Montpellier SupAgro institute:** [elisabeth.mutel@supagro.fr](mailto:elisabeth.mutel@supagro.fr) (Montpellier campus) and [david.kumurdjian@supagro.fr](mailto:david.kumurdjian@supagro.fr) (Florac campus)

**CROUS also** has around a hundred accommodation units specially adapted for people with disabilities. More information:

[www.crous-montpellier.fr](http://www.crous-montpellier.fr) > [Action sociale - santé](#)>[handicap](#)

In this section, students with restricted mobility can fill in an application form for specially adapted accommodation, in which they can explain the adaptations they require. CROUS can then offer them the most appropriate accommodation. Applications can be made throughout the year.

## ▸ WELFARE

There are CROUS welfare workers on hand for students to talk to at CROUS and at the university sites. They can help students with social, emotional or financial problems by providing listening, support, information, securing financial assistance, and taking preventive action.

**CROUS Montpellier welfare service:** +33 (0)4 67 41 50 28 - [service.social@crous-montpellier.fr](mailto:service.social@crous-montpellier.fr)

For all queries, send an email to [service.social@crous-montpellier.fr](mailto:service.social@crous-montpellier.fr) stating:

- your first name and surname
- date of birth and student number (INE)
- subject of study
- telephone number
- precise query

## 4

## PRACTICAL INFORMATION

## C BUDGET

## ► OBLIGATION OF RESOURCES

French law requires that international students demonstrate that they have sufficient resources to cover living costs of €615/per month.

The existence of these resources can be proven by:

- Evidence of grant award,
- A standing order from abroad (officially certified by the bank's stamp),
- Bank statements for the last three months showing the monthly payments (€615/month) or a bank statement stamped, signed and dated in the last three months showing a credit balance equal to at least three months of the required resources.

The amount of €615 per month is a minimum. The first month can cost up to €1,800 (deposit for accommodation, insurance, mutual contribution, etc.).

The cost of registration at the university varies depending on the level of study: €170 for bachelor's degree courses, €243 for master's degree courses, €380 for Ph.Ds, €601 for students at schools of engineering (2020/2021 rates).

## ► MONTHLY BUDGET

This approximately monthly budget is valid for a single student not living in a university hall of residence, i.e. for most students.

Rent (including charges)	€400
Food and drink	€200
Transport	€30
University supplies	€20
Internet	€20
Mobile phone	€30
<b>Total</b>	<b>€700</b>





## › OPENING A BANK ACCOUNT

**Opening a bank account is highly recommended**, particularly for receiving some types of aid paid by bank transfer.

### List of supporting documents required:

- evidence of address (showing exact address),
- school attendance certificate,
- copy of passport and visa.

# 4

# PRACTICAL INFORMATION

## D FOOD

**A varied and balanced range of meals is available at low cost: €3.30 a meal.**

Located at the heart of the sites of study, CROUS university restaurants and cafeterias offer a fast and good value range of catering options suited to the needs of students.

Details of these places to eat are available at [www.crous-montpellier.fr](http://www.crous-montpellier.fr)



## E TRANSPORT

**Car-sharing website:** [www.blablacar.fr](http://www.blablacar.fr)

**Regional train services costing €1:** <https://www.ter.sncf.com/occitanie/offres/tarifs-occitanie/billets-1euro>

**Regional bus services costing €1:** <https://www.laregion.fr/Presentation-de-liO>

### ≡ Montpellier

Bicycle, tram, bus: Transports de l'Agglomération de Montpellier (TAM) offers a variety of fare options and season ticket types for getting around. Find all the information on:

[www.montpellier-agglo.com](http://www.montpellier-agglo.com)

### ≡ Nîmes

In Nîmes, the city-wide bus service is provided by TANGO. Buses and a tram-bus line serve the city daily until 9 p.m. (the tram-bus runs until midnight).

[www.tangobus.fr](http://www.tangobus.fr)

### ≡ Perpignan

The city of Perpignan and the surrounding area offer various different modes of transport to make it easier for you to get around. Further information on:

[www.sankeo.com](http://www.sankeo.com)

## F CULTURE

### » YOOT: Invent your culture

#### Deals, tickets and original experiences for students in the know

More than just the new name for the Pass'Culture Montpellier... YOOT is:

- A cultural web services platform especially for students  
An online box office offering extra special rates, with tickets for shows and concerts ranging from €5 to €10 max and cinema from €3.90
- A range of cultural events with 40 partners, ranging from electro nights to contemporary dance, street theatre to metal concerts, auteur cinema to one-man shows, impressionist exhibitions to performance art...
- A community to find out, discover and share opinions, deals and experiences.
- To make the most of all these services, membership costs €9 and is valid until the start of the following academic year.

For more details: CROUS Montpellier-Occitanie

Tel. +33 (0)4 67 41 50 96 - [yoot@crous-montpellier.fr](mailto:yoot@crous-montpellier.fr) - [www.yoot.fr](http://www.yoot.fr)

### » Campus Culture - Nîmes

For just €7, students in Nîmes can benefit from reduced price tickets for concerts, cinema or theatre, plus entry to the city's many museums and attractions.

They can also buy books, CDs or films at preferential prices.

A few examples: €5 per ticket for the Théâtre de Nîmes, €4 for entry to the Forum in the city centre, €3.30 for entry to Sémaphore, etc.

More details: City of Nîmes youth service (ORLOJ)

Tel. +33 (0)4 66 27 76 86 - <http://orloj.nimes.fr>

### » Pass'culture - Perpignan

For just €5 for students in receipt of a grant and €10 for other students, Perpignan's Pass'Culture gives students the ability to access cultural events in Perpignan and the surrounding area at very advantageous prices. The Pass'Culture offers the following prices: Cinéma Castillet: €3, Institut Jean Vigo: €3, Théâtre de l'Archipel: €5, Jazzèbre: from €2 to €15, USAP: €5, Festivals: 50% discount

Official shop: Main campus (next to the Aquarium cafeteria)

52 avenue Paul Alduy - 66860 Perpignan

Tel. +33 (0)4 68 66 17 93 - [pass-culture@univ-perp.fr](mailto:pass-culture@univ-perp.fr)

Opening hours: Monday to Friday from 10 a.m. to 4 p.m. Website: <http://pass-culture.upvd.fr/>

# 4

## PRACTICAL INFORMATION

### G

## DOCUMENTS TO BE SUPPLIED FOR ADMINISTRATIVE PROCEDURES

### ACCOMMODATION

#### 1. Rental bond:

- Passport
- Guarantor's identity document
- Guarantor's last three pay slips and tax statement
- Evidence of guarantor's address (e.g. electricity or telephone bill)
- Full bank details (for the tenant and guarantor)

#### 2. Multi-risk home insurance

---

### BANK

- Evidence of address (rent receipt or tenancy agreement)
  - Passport with visa
- 

### HOUSING BENEFIT (CAF)

- Completed application form
  - RIB (bank details)
  - For non-Europeans: birth certificate with apostille
- 

### ADMINISTRATIVE REGISTRATION

#### AT THE HIGHER EDUCATION ESTABLISHMENT

- Your original passport and a photocopy of your passport showing your student visa (non-EEA) or residence permit
- The registration form, duly completed
- The acceptance letter or email from the higher education establishment where you are registering
- Your original birth certificate translated into French and a photocopy
- If you are starting an undergraduate course (L1): original certificate of the qualification required for university admission in your country accompanied by a translation by a consular service or by sworn translator and a photocopy.
- For all other levels of study: in addition to your *baccalauréat*, the original certificate of the qualification required for admission by equivalence with an official translation and a photocopy

*NB: Remember to bring several originals and photocopies of each of these documents and several identity photos.*

## **H** GLOSSARY

**BAC:** Baccalaureate

**BDE:** Bureau des Étudiants (Student Office)

**CAF:** Caisse d'Allocations Familiales (Family Benefits Fund)

**CMU:** Couverture Maladie Universelle (Universal Health Coverage)

**CPAM:** Caisse Primaire d'Assurance Maladie (Primary Medical Insurance Fund)

**CRIJ:** Centre Régional d'Information Jeunesse (Regional Youth Information Centre)

**CROUS:** Centre Régional des œuvres Universitaires et Scolaires  
(Regional affiliate of the French national student service agency)

**ENT:** Espace Numérique de Travail (digital workspace)

**MDE:** Maison des Étudiants (Student House)

**PHARE:** Point Hébergement Accueil et Recherche de logement pour les Etudiants Internationaux  
(Accommodation Service for International Students)

**RIB:** Relevé d'Identité Bancaire  
(Bank account identification document)

**SAMU:** Service d'Aide Médicale d'Urgence  
(Emergency medical services)

**UFR:** Unité de Formation et de Recherche  
(Teaching and Research Unit)

### ≡ Abbreviations

**BU:** Bibliothèque Universitaire (University library)

**Cafét':** Cafeteria

**Cité U:** Cité Universitaire (University hall of residence)

**Coloc':** Colocation (House/flat share)

**Fac:** Faculty = UFR = Teaching and Research Unit

**RU or resto'U:** Restaurant Universitaire (Refectory)

**Tram':** Tramway

**RDV:** Rendez-vous (Appointment)





# CONTACTS



## CROUS DE MONTPELLIER-OCCITANIE

Service accueil international - 2 rue Monteil - CS 85053 - 34033 Montpellier - France  
Tel. +33 (0)4 67 41 50 38 - [international@crous-montpellier.fr](mailto:international@crous-montpellier.fr)  
[www.crous-montpellier.fr](http://www.crous-montpellier.fr)



## PAUL VALÉRY-MONTPELLIER 3 UNIVERSITY

Direction des relations internationales et de la francophonie  
Bâtiment I - Eugène Ionesco - Route de Mende - 34199 Montpellier cedex 5 - France  
Tel. +33 (0)4 67 14 55 99 - [international@univ-montp3.fr](mailto:international@univ-montp3.fr) - [www.univ-montp3.fr](http://www.univ-montp3.fr)



Service Accueil  
International  
Étudiants - Chercheurs

## SERVICE ACCUEIL INTERNATIONAL ÉTUDIANTS/CHERCHEURS (SAIEC INTERNATIONAL STUDENT OFFICE)

Université Paul Valéry Montpellier 3  
8, Rue de l'École Normale - CS 78290 - 34197 Montpellier Cedex 5 - France  
Tel.: +33 (0)4 67 41 67 87 - Email: [saiec@univ-montp3.fr](mailto:saiec@univ-montp3.fr) - [www.saiec.fr](http://www.saiec.fr)  
[www.parrainage-international.fr](http://www.parrainage-international.fr) / [www.euraxess-lr.fr](http://www.euraxess-lr.fr)



## UNIVERSITY OF MONTPELLIER

Direction des Relations Internationales - Service Mobilité  
163 rue Auguste Broussonnet - 34090 Montpellier - France  
Tel. +33 (0)4 34 43 23 28 - [mobility@umontpellier.fr](mailto:mobility@umontpellier.fr) - [www.umontpellier.fr](http://www.umontpellier.fr)



## UNIVERSITY OF NÎMES

Service des Relations Internationales  
Rue du Dr. Georges Salan - CS 13019 - 30021 Nîmes cedex - France  
Tel. +33 (0)4 66 36 45 83 - [international@unimes.fr](mailto:international@unimes.fr) - [www.unimes.fr](http://www.unimes.fr)



## UNIVERSITY OF PERPIGNAN VIA DOMITIA

Service des Relations Internationales  
52 avenue Paul Alduy - Bât. A RDC - 66860 Perpignan - France  
Tel. +33 (0)4 68 66 22 18 - [sec-suri@univ-perp.fr](mailto:sec-suri@univ-perp.fr) - [www.univ-perp.fr](http://www.univ-perp.fr)

## AGRO | MONTPELLIER SUPAGRO INSTITUTE NATIONAL HIGHER EDUCATION INSTITUTE FOR AGRICULTURE, FOOD AND THE ENVIRONMENT

Service des relations internationales et des langues (SRIL)  
2 place Pierre Viala - 34060 Montpellier cedex 2 - France  
Tel. +33 (0)4 67 61 70 27 - [direction-sril@supagro.fr](mailto:direction-sril@supagro.fr) - [www.montpellier-supagro.fr](http://www.montpellier-supagro.fr)



## ÉCOLE NATIONALE SUPÉRIEURE DE CHIMIE DE MONTPELLIER (MONTPELLIER HIGHER INSTITUTE OF CHEMISTRY)

Service de la vie étudiante  
240 avenue du Professeur Emile Jeanbrau - 34090 Montpellier - France  
Tel. +33 (0)4 67 14 43 24 - [international@enscm.fr](mailto:international@enscm.fr) - [www.enscm.fr](http://www.enscm.fr)